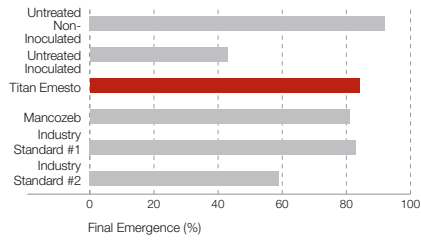


## FUSARIUM RESEARCH TRIALS

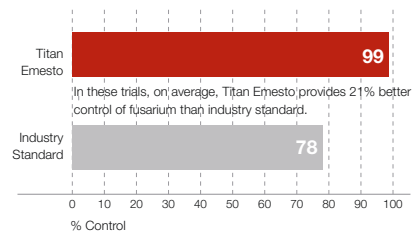
### Final Emergence of Seed-Borne Fusarium (Inoculated Trials)

Source: 5 trials, 2009 – Alberta, Manitoba, Ontario and PEI.



### Percent Control of Seed-Borne Fusarium on Held Seed (Non-Inoculated)

Source: 2 trials, 2008 – Ontario.

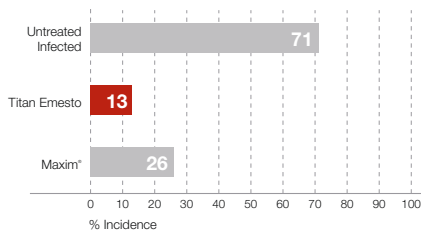


\* Trials may contain fusarium resistant strains that are resistant to industry standards.

## SEED-BORNE RHIZOCTONIA RESEARCH TRIALS

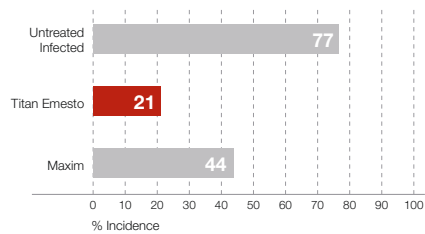
### Percent Incidence of Seed-Borne Rhizoctonia on Stems and Stolons

Source: 3 trials, 2009 – Manitoba, Ontario and PEI.



### Percent Incidence of Seed-Borne Rhizoctonia on Tubers

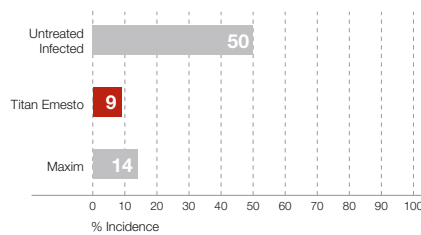
Source: 3 trials, 2009 – Manitoba, Ontario and PEI.



## SILVER SCURF RESEARCH TRIALS

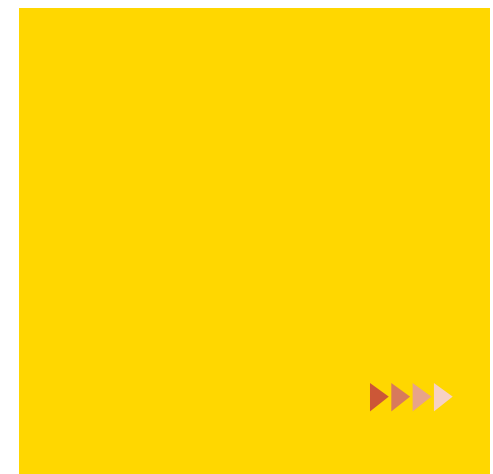
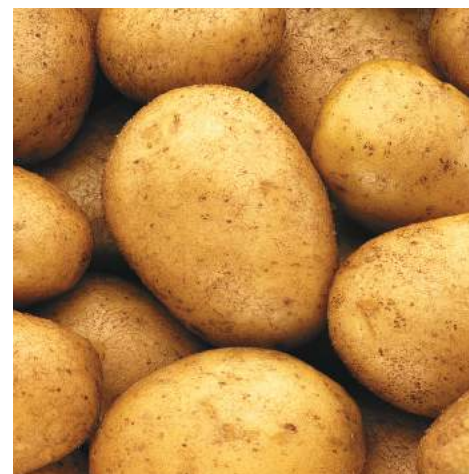
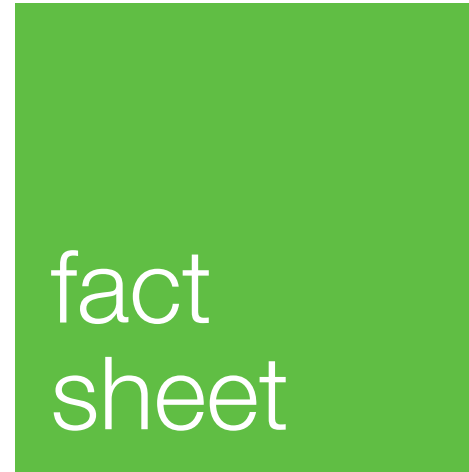
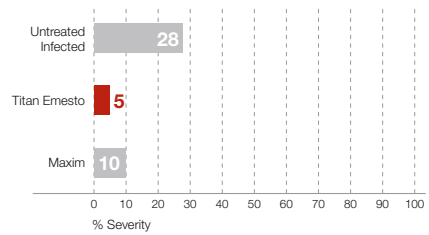
### Percent Incidence of Silver Scurf on Tubers

Source: 2 trials, 2007-2008 – Ontario and PEI.



### Percent Severity of Silver Scurf on Tubers

Source: 3 trials, 2007-2008 – Ontario and PEI.



cropscience.bayer.ca or 1 888-283-6847 or contact your Bayer Representative.  
 @Bayer4CropsCA

Always read and follow label directions. Emesto® and Titan® are registered trademarks of the Bayer Group. Bayer CropScience Inc. is a member of CropLife Canada.

H-76-01/17-10703727-E

# did you know?

TITAN® EMESTO® PROVIDES EXCELLENT FUSARIUM PROTECTION (INCLUDING CURRENT RESISTANT STRAINS), SUPERIOR SEED-BORNE RHIZOCTONIA CONTROL, GOOD ACTIVITY ON SILVER SCURF AND UNSURPASSED INSECT CONTROL.

## FEATURES AND BENEFITS

- A complete liquid insecticide and fungicide potato seed-piece treatment for protection against major insects and diseases in one convenient package
- A co-pak of Titan (the broadest spectrum seed-piece insecticide) + Emesto Silver (a fungicide with two modes of action) for an all liquid seed-piece treatment
- Excellent fusarium tuber rot control (including current resistant strains)
- Superior control of seed-borne rhizoctonia (black scurf and stem and stolon canker)
- Good activity on silver scurf
- Unsurpassed insect control
- Coloured formulation that facilitates safe and uniform application
- Low dose rate
- Low water volumes

## REGISTERED CROPS

- Potatoes

## APPLICATION TIPS

- For optimal disease and insect control, good uniform coverage of the seed-piece is required
- Seed pieces should be treated immediately after cutting
- An application of an absorbent ingredient may be applied to improve suberization
- Avoid treating excessively sprouted seed
- Treatment of mechanically damaged or poor quality or low vigour seed may result in reduced germination, vigour and/or yield
- If cut seed pieces need to be stored or held for a few days, make sure that there is adequate cool air movement through the pile of cut seed potatoes at relative humidity of 85-90%. Store cut seed at or below 7°C. Temperatures above 10°C promote soft rot in seed. Cut and treated seed should not be piled above 1.8 m in height.
- After cutting, treated seed pieces should be planted in soil above 7°C with adequate soil moisture required for planting
- When transporting Titan Emesto treated seed, make sure the seed is covered with a tarp
- Due to seed quality and storage conditions beyond the control of Bayer, no claims are made with regard to germination of potato seed pieces after treatment with Titan Emesto

## ROTATIONAL CROPS

- Corn, canola and potatoes may be re-planted at any time
- A 30-day plant-back interval for cereal grains, grasses, non-grass animal feeds, soybeans and dried beans is required
- A one-year plant-back interval is required for leafy, root and tuber vegetables (except potatoes)

## RESISTANCE MANAGEMENT

- Rotate the use of Titan Emesto with different Groups that control the same pests
- For disease resistance management, Titan Emesto is not recommended on two consecutive seed generations
- Determine pesticide use on an Integrated Pest Management program that includes scouting, record keeping and considers cultural, biological and other chemical control practices

## EQUIPMENT

- Commercial equipment with the ability to provide adequate coverage to the seed piece

## SOLUTION VOLUME

- No more than 150 mL of total solution volume/100 kg seed (68 mL/cwt seed)

## MODE OF ACTION

- Group 4 insecticide
- Group 3 and 7 fungicides

## FORMULATION AND PACKAGING

Co-pak of:

- Titan – 3 L jug
- Emesto Silver – 3.85 L jug

INSECTS	DISEASES	RATE
Aphids (potato, green peach, foxglove and buckthorn)	Fusarium tuber rot, including current resistant strains	<b>Emesto Silver</b> 20 mL/100 kg seed (9.1 mL/cwt seed)
Colorado potato beetle	Seed-borne rhizoctonia (black scurf and stem and stolon canker)	<b>Titan</b> 15.6 mL/100 kg seed (7.1 mL/cwt seed)
Potato flea beetle	Silver scurf ( <i>Helminthosporium spp.</i> )	
Potato leafhopper		
Reduction of wireworm damage*		

\*When Titan is used at the high rate (20.8 mL/100 kg seed (9.5 mL/cwt))