



# EXCEPTIONAL DISEASE AND INSECT PROTECTION FOR YOUR PULSES WITH ONE CONVENIENT PACKAGE



Introducing Trilex® EverGol® SHIELD fungicide and insecticide seed treatment, for complete disease and insect protection in pulses. It is packaged to provide flexibility for on-farm and commercial seed treating operations while protecting against seed- and soil-borne diseases including rhizoctonia, ascochyta, pythium, fusarium, botrytis and from insects including wireworm and pea leaf weevil.

Trilex EverGol SHIELD is a concentrated product allowing the treater to control water volume and to optimize application volume and ensure uniform coverage.

### Features and Benefits:

- Puts complete control in the grower's or applicator's hands
- Easy cleanup
- Convenient packaging for both on-farm and commercial treaters

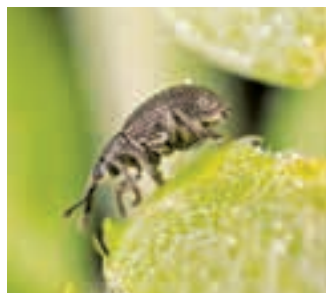
### Application Tips:

- Recommend adding 11 L of water per case, which can be adjusted depending on seed wetness, other mix partners and seed/environmental conditions
- Once mixed with water, Trilex EverGol SHIELD has similar flow characteristics to water, resulting in ease of application
- Always wear personal protective equipment when handling seed treatments or treated seed
- Always calibrate seeding equipment with treated seed, as seed flow can be affected

CROPS	LABELLED DISEASES	LABELLED INSECTS
Beans (dry, edible, faba, etc.)	<i>Ascochyta</i> spp. <i>Botrytis cinerea</i> <i>Fusarium</i> spp.	Pea leaf weevil (faba beans only) Potato leafhopper (dry beans, edible beans only) Wireworm
Chickpeas	<i>Pythium</i> spp. <i>Rhizoctonia solani</i>	Wireworm
Lentils		
Peas		Pea leaf weevil (field peas only) Potato leafhopper (dry peas only) Wireworm



Pea Leaf Weevil Larvae



Adult Pea Leaf Weevil



Resulting Root Damage

### Trilex EverGol SHIELD Application Rate

Trilex Component A	25 mL/100 kg seed
Trilex Component B	16 mL/100 kg seed
Stress Shield®	104 mL/100 kg seed

### Trilex EverGol SHIELD Packaging

Trilex Component A	1.5 L jug	Treats 221 bu. of beans, chickpeas, lentils and peas based on 60 lbs/bu. Always treat based on actual seed weight for best results.
Trilex Component B	0.96 L jug	
Stress Shield	6.25 L jug	

#### Mixing Instructions:

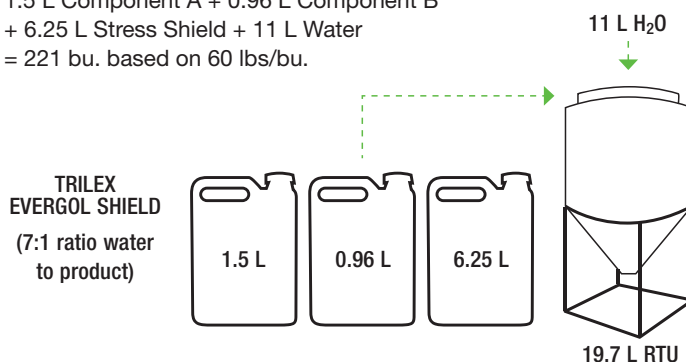
For best results add 5.5 L of the carrier or water to the mix tank. Next add Trilex Component A, then Trilex Component B, then Stress Shield and fill with the remaining 5.5 L of the carrier solution. Agitate or mix and apply. Mixing should be completed before each application.

Always ensure proper mixing prior to application.

Always calibrate seeding equipment with treated seed as flow can be affected.

When adding in micronutrient, reduce the amount of water needed by the volume of micronutrient added. Check with nutrient manufacturer for compatibility.

1.5 L Component A + 0.96 L Component B  
+ 6.25 L Stress Shield + 11 L Water  
= 221 bu. based on 60 lbs/bu.



#### Inoculant Compatibility

	ACCELERON BIOAG						
	TagTeam® Peat		Cell-Tech® Peat		Cell-Tech® NS Peat	TagTeam® & Cell-Tech® Liquid	JumpStart®
	Peas	Lentils	Peas	Lentils	Peas and Lentils	Peas and Lentils	Peas and Lentils
Sequential	24 hours	48 hours	24 hours	48 hours	48 hours	N/R	15 days
Simultaneous	24 hours	48 hours	24 hours	48 hours	48 hours	N/R	15 days
Tank Mix	N/R		N/R		N/T	N/R	N/R

	BASF			
	Nodulator® Duo SCG	Nodulator® XL LQ	Nodulator® XL Peat	Nodulator® XL SCG
	Peas and Lentils	Peas and Lentils	Peas and Lentils	Peas and Lentils
Sequential	F/C	N/R	4 hours	F/C
Simultaneous	F/C	N/R	2 hours	F/C
Tank Mix	F/C	N/R	N/R	F/C

Always refer to the individual product labels for proper use instructions and restrictions. Compatibility data has been provided by Acceleron BioAg and BASF. F/C = Fully compatible N/R = Not recommended N/T = Not tested

